

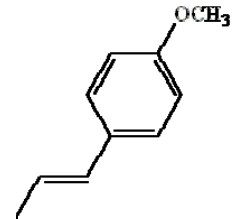
TECHNICAL DATA SHEET

Natural Anethole

GENERAL PRODUCT DESCRIPTION

Natural Anethole derived from fractional distillation of Chinese star aniseed oil,,

Appearance Colorless to lightly yellow clear liquid
 Odour Sweet and anise like odour and taste
 CAS No. 4180-23-8



PRODUCT SPECIFICATIONS

| Product specification | Typical Properties |
|--------------------------------------|--------------------|
| Refractive Index(n ₂₀ /D) | 1.5570-1.5620 |
| Freezing point | 21 °C min. |
| Relative Density(20/20 °C) | 0.9860-0.9910 |
| Content (G.C.) | 99%min. |

APPLICATIONS

Widely used in flavours and fragrances tooth paste, chewing gums, cosmetics, syrups, tooth paste.

FORM OF SUPPLY

Net wt.200KGS.Packing in gallons galvanized iron drums

STORAGE CONFITIONS:

Stored in Cool, dry and ventilated location. Protected from light and covered with nitrogen in container.

Shelf life: Two years with proper storage.